

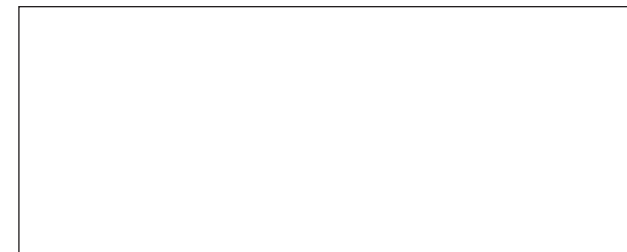
SOLIDEAL MAGNUM

TIRE SIZE	RIM (1) SIZE	BASE TIRE QUICK	TIRE DIMENSION inches (3)		LOAD CAPACITY (lbs) (2)					STATIC 0 mph
			MAX. WIDTH	O.D. ± 2%	FORKLIFT TRUCKS		OTHER VEHICLES (4)			
					LOAD WHEEL	STEER WHEEL	4 mph	6 mph	16 mph	
3.00 - 4	2.10 - 4		3.43	9.85	562	430	562	507	430	650
	2.50C - 4									
4.00 - 4	2.10 - 4		4.57	12.06	1180	904	1180	1069	904	1367
	2.50C - 4		4.57							
4.00 - 8	3.00D - 8	■	5.12	16.00	2095	1610	2095	1896	1610	2426
5.00 - 8	3.00D - 8	■	5.63	18.05	3120	2403	3120	2833	2403	3627
	3.25I - 8									
15 x 4 1/2 - 8	3.00D - 8	■	5.20	14.85	2293	1764	2293	2073	1764	2668
	3.25I - 8									
16 x 6 - 8	4.33R - 8	■	6.46	16.43	2800	2150	2800	2536	2150	3241
18 x 7 - 8	4.33R - 8	■	7.37	17.85	4730	3638	4730	4289	3638	5490
5.00 - 9	3.50D - 9		5.08	19.19	3186	2448	3186	2889	2448	3693
6.00 - 9	4.00E - 9	■	6.82	20.84	4156	3197	4156	3771	3197	4829
21 x 8 - 9	6.00E - 9	■	8.51	20.65	6075	4675	6075	5524	4675	7056
6.50 - 10	5.00F - 10	■	7.53	22.69	5160	3969	5160	4686	3969	5998
7.50 - 10	5.00F - 10	■	8.83	24.09	6769	5204	6769	6141	5204	7861
	5.50F - 10	■	8.83							
23 x 9 - 10	6.50F - 10	■	9.57	22.97	7596	5843	7596	6891	5843	8820
200/50 - 10	6.50F - 10	■	7.88	18.01	5446	4190	5446	4939	4190	6328
7.00 - 12	5.00S - 12	■	8.16	25.89	6439	4939	6439	5832	4939	7453
8.25 - 12	5.00S - 12		8.27	28.53	7585	5832	7585	6880	5832	8809
23 x 10 - 12	8.00G - 12	■	10.84	22.97	8313	6395	8313	7541	6395	9658
27 x 10 - 12	8.00G - 12	■	10.84	26.63	8600	6615	8600	7806	6615	9989
150/100 - 13 (23x5)	3.75P - 13	□	6.58	24.51	3296	2536	3296	2988	2536	3826
6.00 - 15	4.50 - 15		6.50	27.58	6009	4619	6009	5446	4619	6979
7.00 - 15	5.50 - 15	■	8.39	28.80	7816	6009	7817	7089	6009	9074
7.50 - 15	5.50 - 15	■	9.02	29.83	8600	6615	8600	7806	6615	9989
	6.00 - 15	■								
	6.50 - 15	■	9.02	29.83						
8.25 - 15	5.50 - 15	■								
	6.00 - 15	■								
	6.50 - 15	■	9.97	32.27	10474	8048	10474	9482	8048	12150
28 x 9 - 15	7.00 - 15	■	9.18	27.30	7596	5843	7596	6891	5843	8820
250 - 15	7.00 - 15	■	10.44	28.37	10231	7872	10231	9261	7872	11885
	7.50 - 15									
300 - 15	8.00 - 15	■	12.77	32.43	12646	9724	12646	11488	9724	14685
28 x 12.5 - 15	9.75 - 15	■	12.53	27.30	11113	8544	11113	10088	8544	12899
355/65 - 15	9.75 - 15	■	13.99	32.43	17199	13230	15435	14178	12017	19977
10.00 - 20	6.50 - 20		11.31	40.54	12877	10727	12877	11720	10727	16196
	7.00 - 20		11.50							
	7.50 - 20		11.70		13230	11025	13230	12017	11025	16648
	8.00 - 20		11.90							
12.00 - 20	8.00 - 20		13.08	43.26	16538	13781	16538	15027	13781	20815
	8.50 - 20		13.28							
12.00 - 24	8.00 - 24		13.08	47.12	17596	14663	17596	15986	14663	22138
	8.50 - 24		13.28							
14.00 - 24	10.00 - 24		15.96	51.73	24255	20231	24255	22050	20231	30550
14.00 - 25	11.25 - 25		15.96	52.99	27563	22932	27563	24994	22932	34630

021 STANDARD BASE 003022 QUALITY NM ■ Available
 023 QUICK BASE 003042 QUALITY AS □ Available later 1999/2000
 003002 QUALITY ERS 003052 QUALITY ELCON
 003012 QUALITY SRS 003062 QUALITY NON-MARKING GREEN

- REMARKS:
- Check rim for size, especially on width, as this should correspond to tire base marking. Check also max. load of rim with rim manufacturer, as wheel load will be restricted by lowest load capacity, either the one given by the rim or by the tire.
 - The speeds quoted in the table are the maximum speeds of the unloaded vehicle. An increase in load capacity for lower speeds is not permitted. Loads are valid for intermittent service only, they do not include the additional weight of the tires.
 - The sizes given are according to ETRTO, where available. Due to their construction and to ensure the interchangeability with pneumatic tires, the solid tire may be substantially smaller than the overall width in service of the equivalent pneumatic. For more accurate information please contact the technical department.
 - This category includes:
 - drive and steer wheels on other than counter-balanced forklift trucks - wheels on mobile cranes
 - free rolling wheels on trailers, up to a maximum distance of 2186 yds per journey.
 For longer distances, fitted to wheels for rotary plants and for straddle carrier applications please consult the technical department.

DISTRIBUTED BY



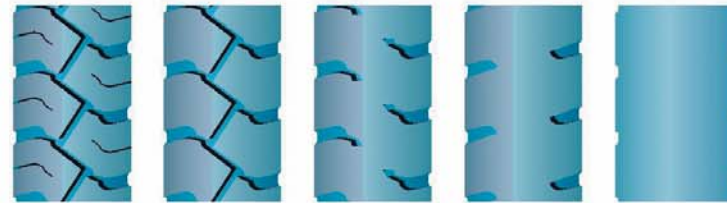
SOLIDEAL MAGNUM



THE NATURAL CHOICE

A MAGNUM FOR THE NEW MILLENNIUM

A MAGNUM FOR THE NEW MILLENNIUM



THE FIVE LIVES OF MAGNUM

After consultations with end users throughout the world, Solideal realized that there was a need for a "Premium Plus" resilient solid tire.

Working closely with outside specialists, our design team, utilizing CAD technology and computer modeling, spent over two years developing the Solideal Magnum. Our chemists formulated brand new natural rubber compounds for the tread rubber and the highly resilient center core. They also used the latest chemical strengtheners in the rubber base to create the toughest and most durable solid resilient tire in the world.

The Magnum tread has extra deep lugs for maximum traction. A lug to void ratio far greater than competitor's tires will ensure longer

lifetime. The wide flat tread profile gives a huge footprint for optimum stability.

The highly resilient center compound absorbs shocks thus cushioning the load and allowing even greater driver comfort.

Engineered steel beads in the extra strengthened base compound give a positive fitment for both the standard tire and the "quick" variant. This tough base also gives greater support for the load.

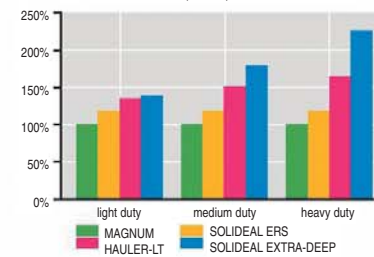
Natural rubber has inherent low heat build-up and low rolling resistance properties.

Because Solideal uses only premium natural rubber, the Magnum will run at higher speeds over longer distances.

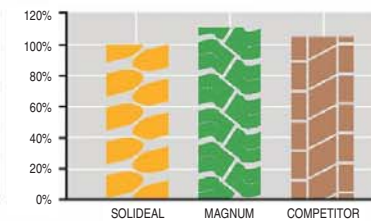


THE NATURAL CHOICE

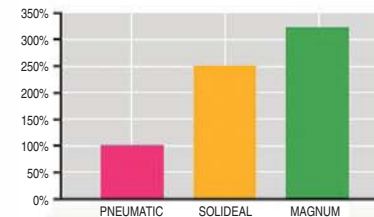
COST PER HOUR COMPARISON
INCLUDING TIRE PRICE, WEAR, MAINTENANCE AND REPAIR



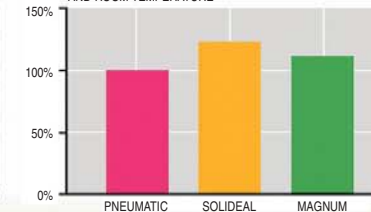
FOOT PRINT COMPARISON
SIZE 7.00 - 12 / FULL LOAD



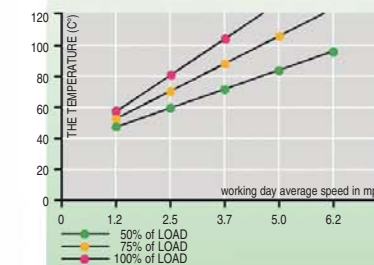
AVERAGE LIFE TIME COMPARISON
BASED ON 7.00 - 12 DRIVE TIRE



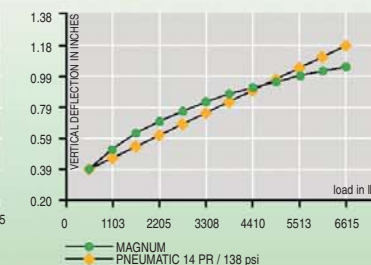
ROLLING RESISTANCE COMPARISON
BASED ON 7.00 - 12 / 12 MPH, FULL LOAD AND ROOM TEMPERATURE



TIRE WORKING TEMPERATURE
SOLIDEAL MAGNUM 7.00 - 12



STATIC DEFLECTION
SIZE 7.00 - 12



THE NATURAL CHOICE



If you need the very best you need the Magnum.

- Wide selection of compounds:
- ERS
 - SRS
 - ALL WHITE
 - ANTI-STATIC
 - ELECTRICALLY CONDUCTING
 - ECR